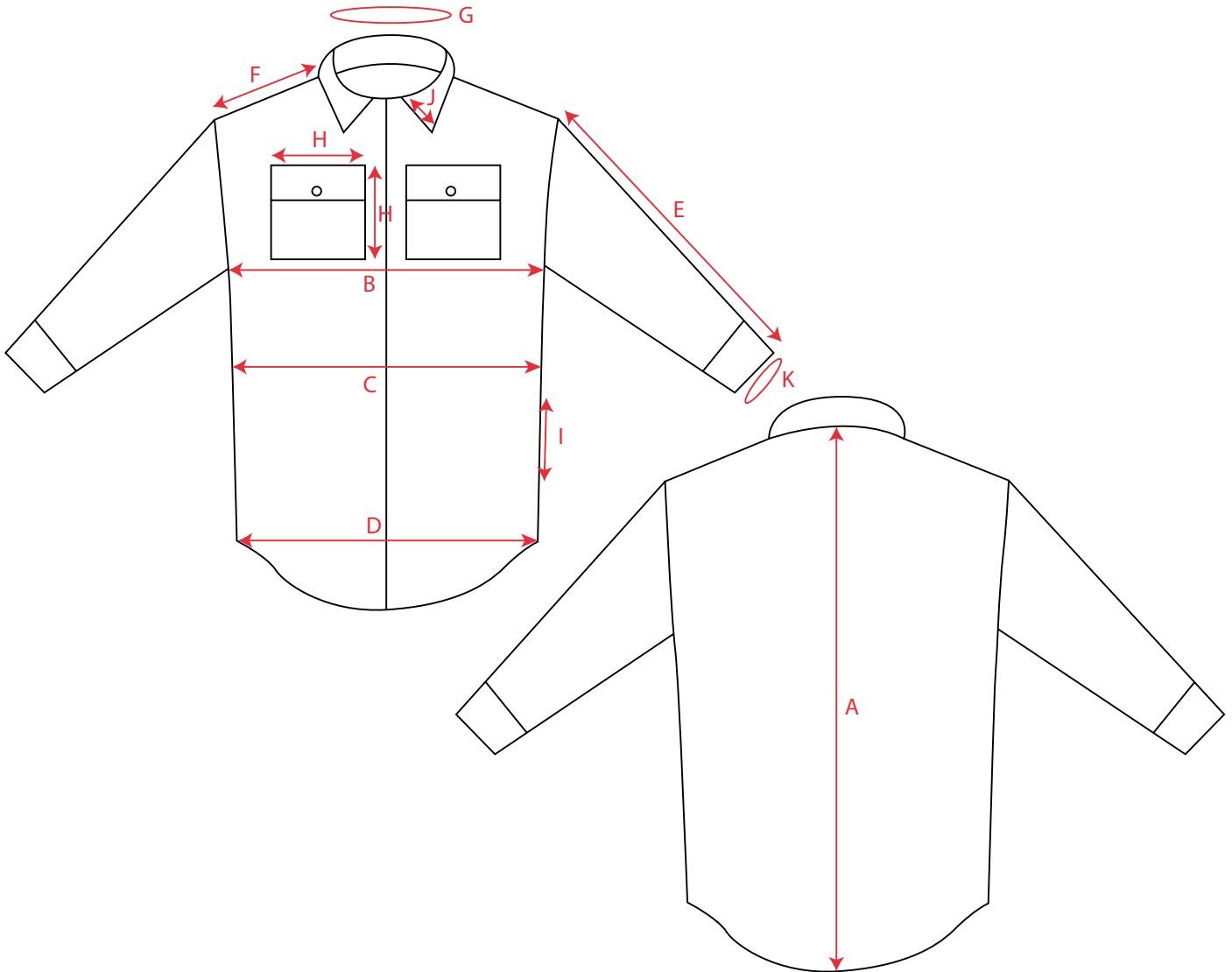


# Canada



Measurement in cm		S	M	L	XL	XXL	3XL
A	Body lenght CB	77	80	83	86	89	92
B	½ Chest	57	59	61	63	65	67
C	½ Waist	55	57	59	61	63	65
D	½ Bottom	57	59	61	63	65	67
E	Sleeve length	60	62	64	66	68	70
F	Shoulder	17	18	19	20	21	22
G	Collar length in ttl	43	45	47	49	51	53
H	Chest pocket height (incl. lid)/Width	16x14,5					
I	Pocket opening in side seam	15			16		
J	Collar point	7					
K	Sleeve cuff length	26	27	28	29	30	31